

COVID-19 Update

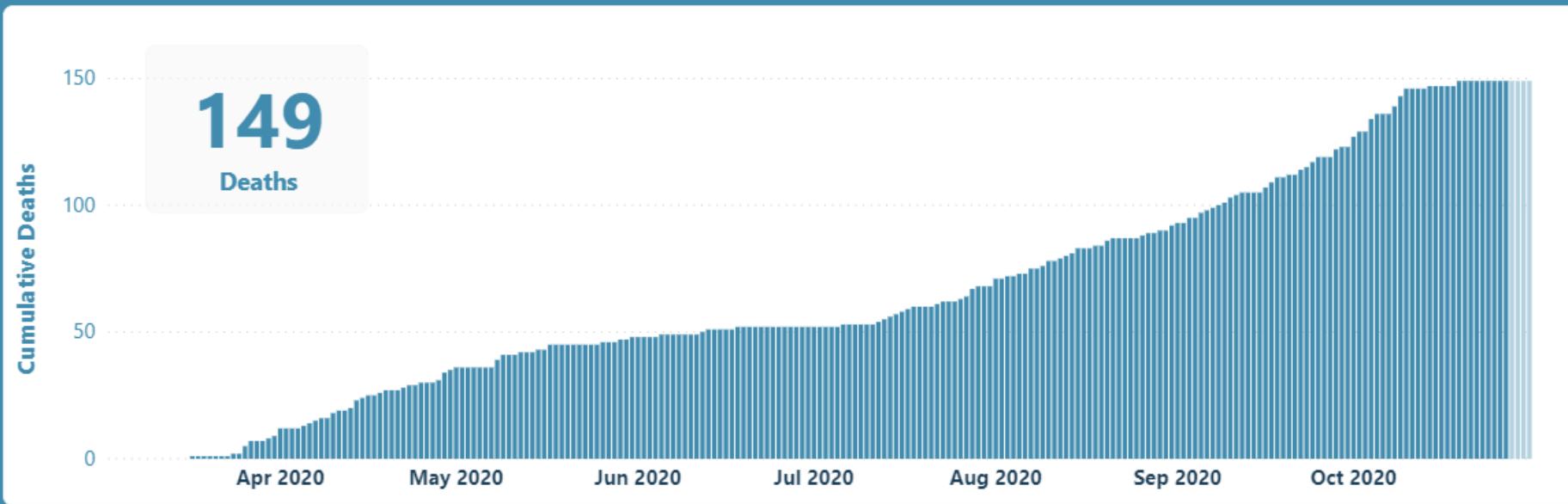
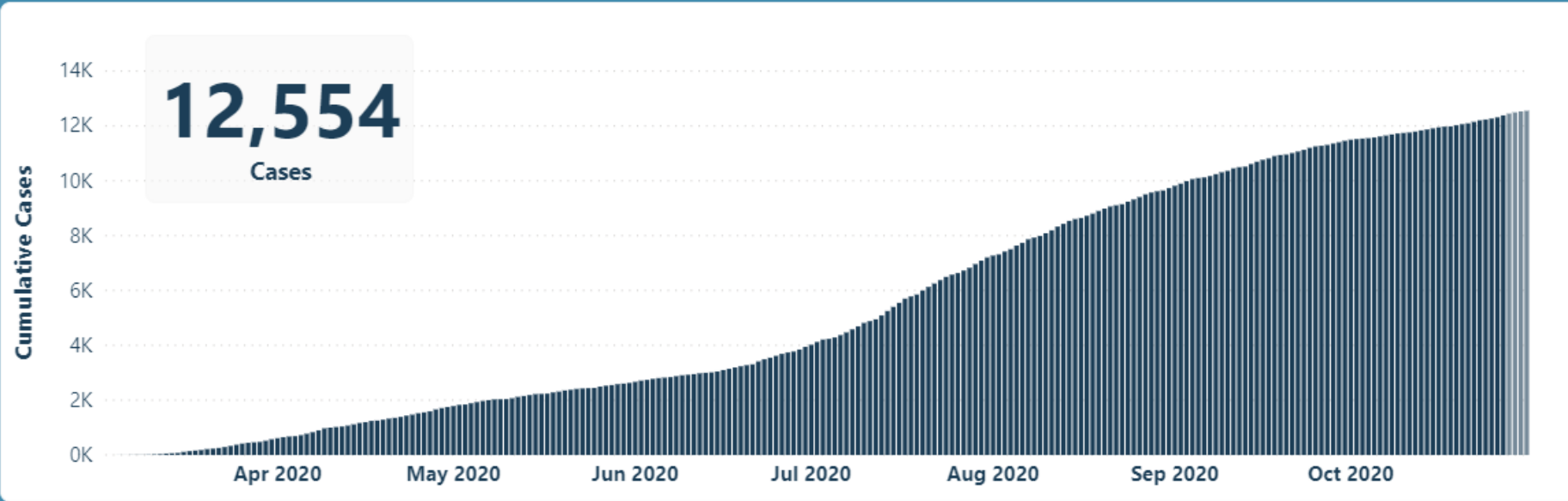
Grant Colfax, MD
Director of Health

November 3, 2020



SAN FRANCISCO DEPARTMENT OF PUBLIC HEALTH

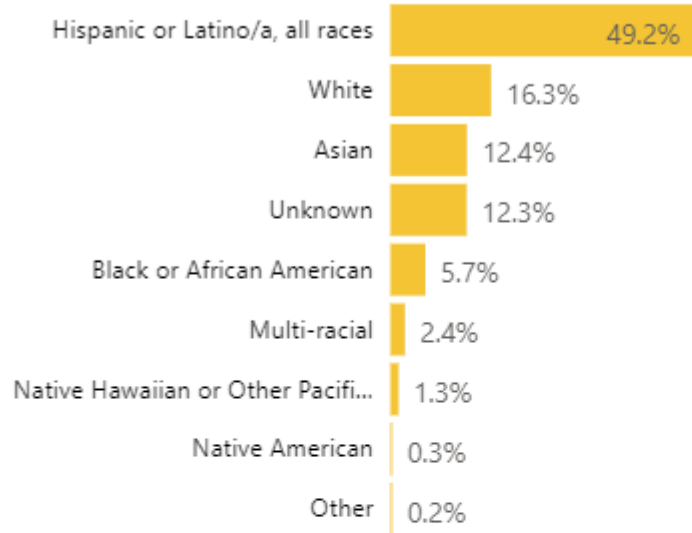
Cumulative Cases and Deaths



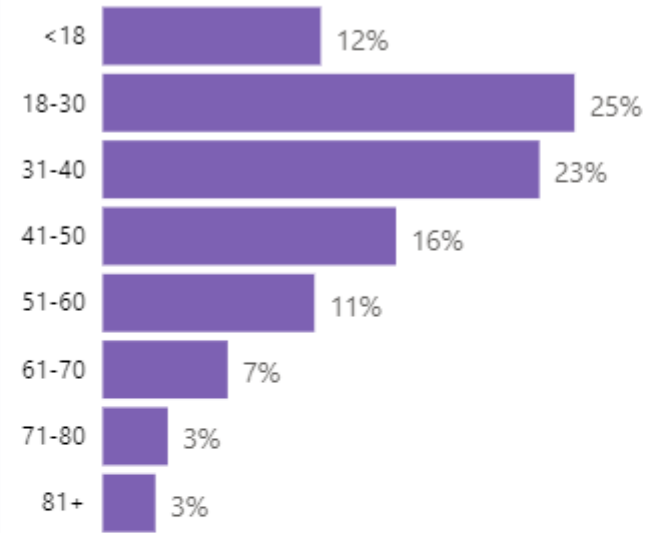
Population Characteristics: Positive Cases



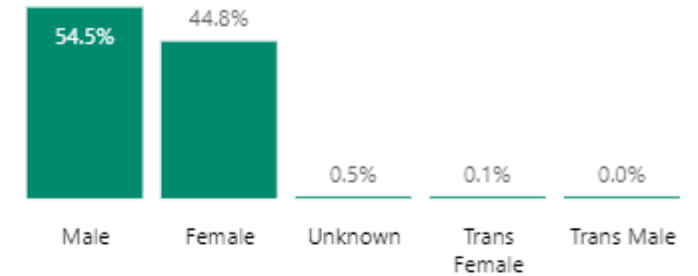
Cases - Race/ Ethnicity



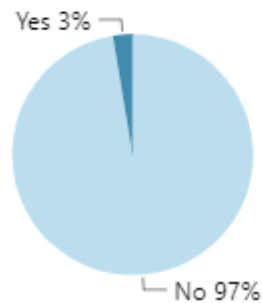
Cases - Age Group



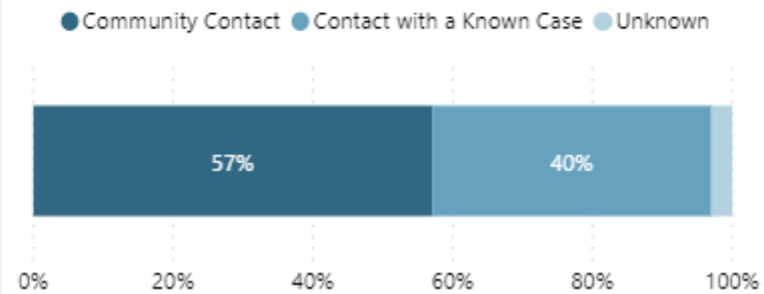
Cases - Gender



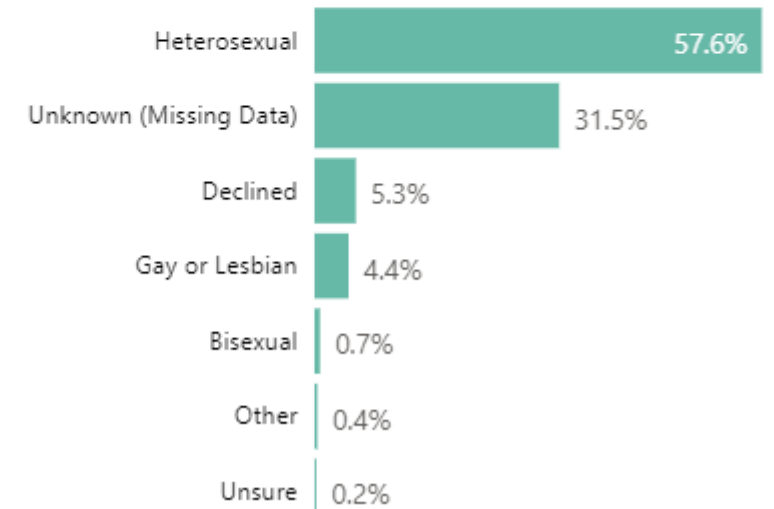
Cases - Experiencing Homelessness



Cases - Transmission



Cases - Sexual Orientation



County COVID-19 Comparisons



City	County	State	Deaths/100,000	Cases/1000	Deaths/1000 cases	Tests/1000
San Francisco	San Francisco	CA	16.2	14.1	1.15%	5.86
Seattle	King	WA	35.9	11.8	3.05%	2.73
Atlanta	Fulton	GA	58.2	29.1	2.00%	1.21
Baltimore	Baltimore City	MD	60.6	21.2	2.85%	4.40
Los Angeles	Los Angeles	CA	67.3	28.9	2.33%	1.41
Denver	Denver	CO	72.8	28.8	2.52%	4.52
DC	DC	DC	91.7	24.1	3.81%	5.31
Philadelphia	Philadelphia	PA	117.4	27.1	4.32%	2.51
Miami	Miami-Dade	FL	133.1	67.2	1.98%	4.64
Boston	Suffolk	MA	145.7	34.6	4.21%	NA
New York City	New York City	NY	284.1	30.3	9.36%	4.60

Updated October 29, 2020

Key Health Indicators



Category	Key Question	Indicator	Triggers to raise or lower level	Level 1 New Normal	Level 2 Low Alert	Level 3 Moderate Alert	Level 4 High Alert
Health Care System	Are there early signs of an increase in hospitalizations?	Rate of increase in total COVID+ hospitalizations	Increase or decrease to meet new threshold over a 7-day period	<10%	10-15%	15-20%	28% <10%
	Do we have capacity to treat severe cases?	Acute care bed available capacity	Meet threshold for over 7 days	25% >15%	10-15%	5-10%	<5%
	Do we have capacity to treat severe cases?	ICU bed available capacity	Meet threshold for over 7 days	41% >20%	15-20%	10-15%	<10%
Disease Situation	Are there early indicators of an increase in COVID-19 disease?	Number of new cases per day/ 100,000 population	Increase or decrease to meet new threshold over a 7-day period	<1.8	1.8-4.0	4.8 4.0-6.0	>6
	Are we testing enough to detect cases?	Tests per day	Meet threshold for over 7 days	5,281 >1,800	1,800-1,400	1,400-700	<700
Disease Control	Do we have robust case investigation?	90% of new cases reached	Meet threshold for over 7 days	>90%	83% 80-90%	65-80%	<65%
	Do we have robust contact tracing?	90% of named contacts reached	Meet threshold for over 7 days	>90%	84% 80-90%	65-80%	<65%
	Are we protecting health care workers?	Percent of essential PPE with greater than a 30-day supply	Increase or decrease to meet new threshold over a 7-day period	100% 100%	85-100%	60-85%	<60%



National Trend – 3rd Surge

New reported cases by day in the United States



	TOTAL REPORTED	ON NOV. 2	14-DAY CHANGE
Cases	9.3 million+	93,581	+44% →
Deaths	231,477	540	+13% →



Bay Area vs US: Case Rate Trends

	TOTAL CASES	PER 100,000	DAILY AVG. IN LAST 7 DAYS	▼ PER 100,000	WEEKLY CASES PER CAPITA
					FEWER MORE
California	944,141	2,389	4,348.9	11	
Contra Costa	19,246	1,668	86.6	7.5	
Santa Clara	25,277	1,311	137.7	7.1	
Alameda	24,116	1,443	100.6	6	
San Francisco	12,511	1,419	50.9	5.8	
San Mateo	11,451	1,494	43.1	5.6	
Marin	7,167	2,769	10	3.9	

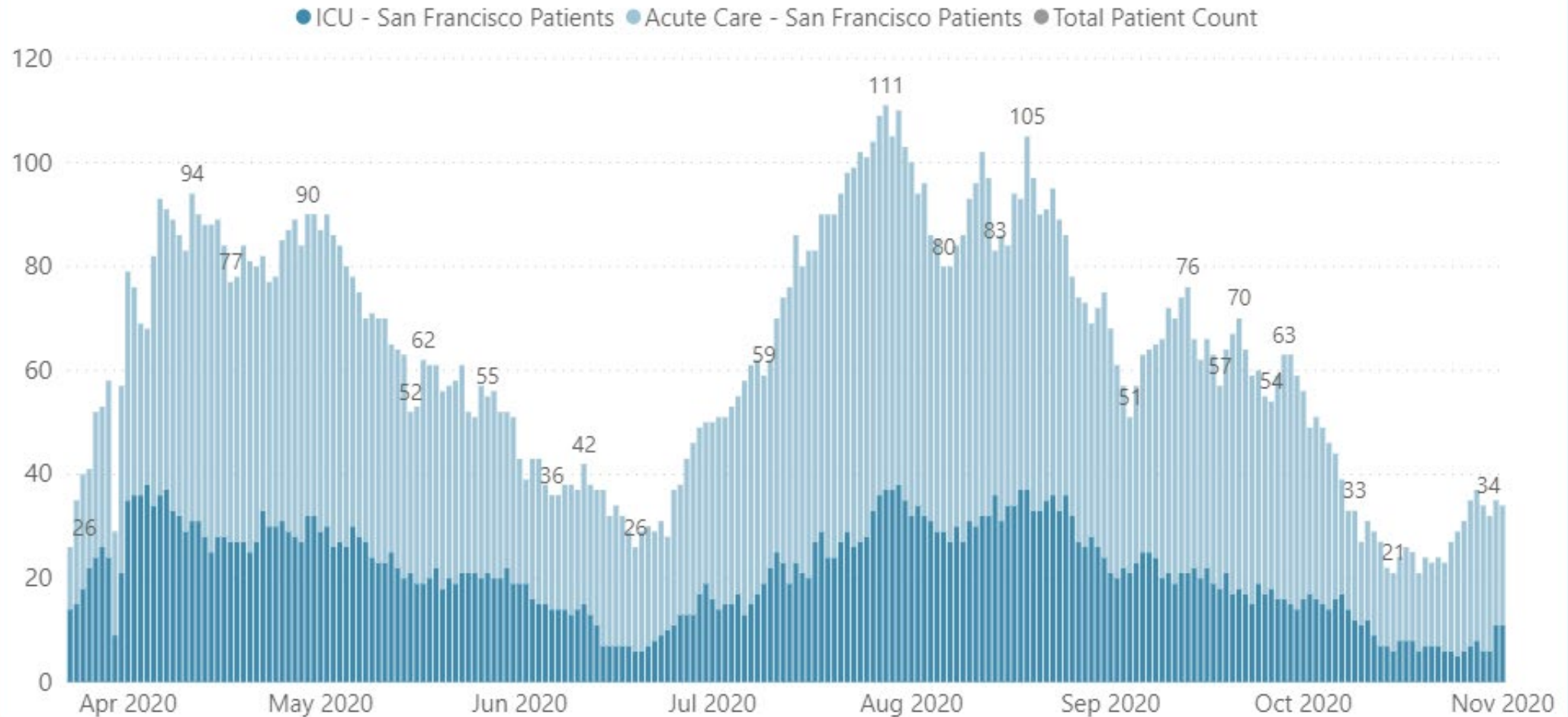
Hot spots: Counties with the highest number of recent cases per resident

COUNTY	TOTAL CASES	PER 100,000	DAILY AVG. IN LAST 7 DAYS	PER 100,000	WEEKLY CASES PER CAPITA
					FEWER MORE
Norton, Kan.	778	14,512	28.9	538.3	
Bon Homme, S.D.	1,022	14,809	35.6	515.5	
Ellsworth, Kan.	409	6,703	25.4	416.7	
Wallace, Kan.	82	5,402	6	395.3	
San Saba, Texas	242	3,997	21	346.8	
Wells, N.D.	208	5,425	12.9	335.3	
Sheridan, Kan.	215	8,528	7.6	300.3	
Walsh, N.D.	659	6,193	31.7	298	

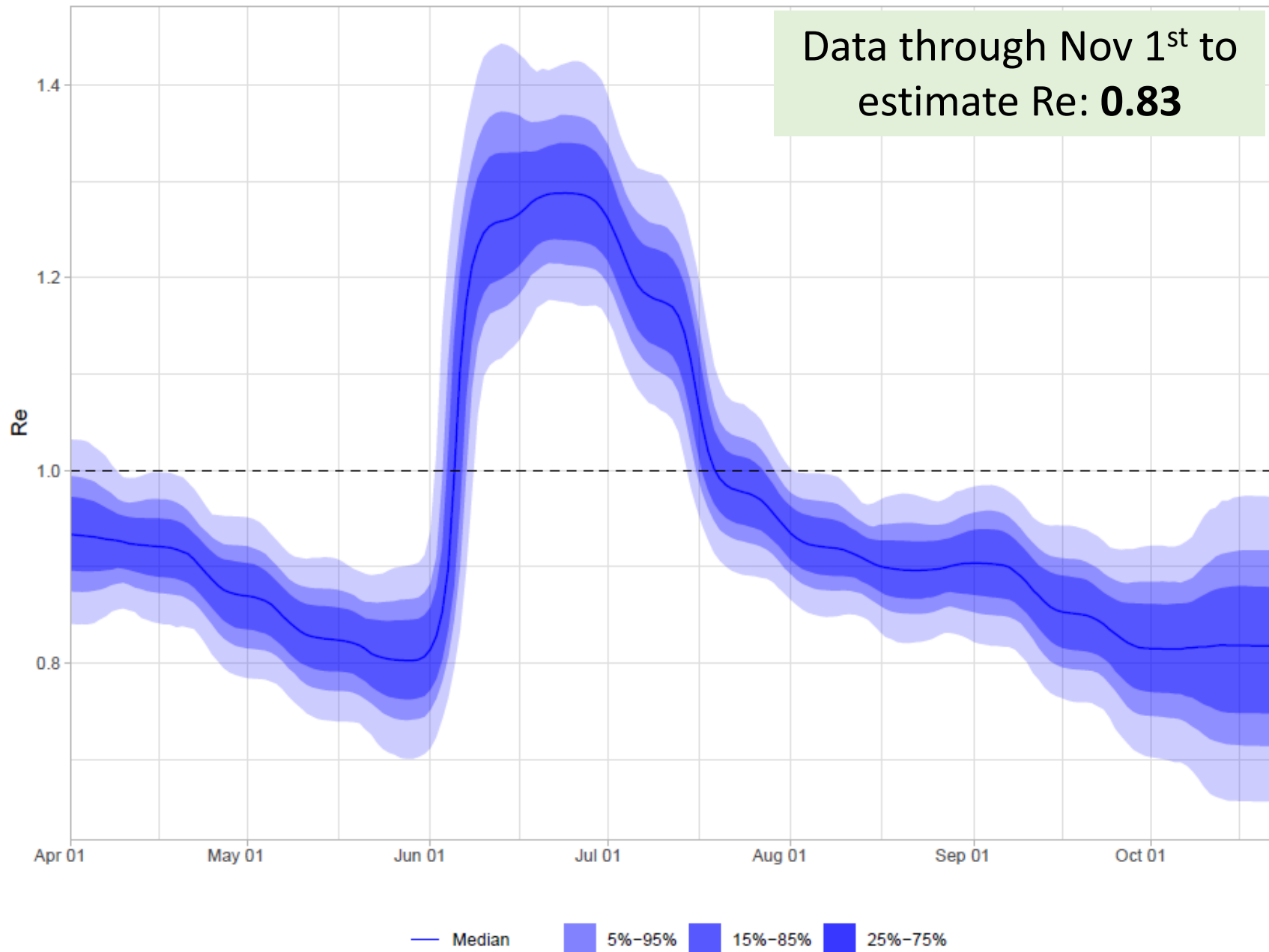
Hospitalizations



COVID-19 Patient Count



Effective Reproduction Number



Temporary Pause on Further Re-openings



- Due to increase in COVID-19 cases and hospitalizations—in SF, CA and across the US—SF has temporarily paused reopening efforts originally planned for November 3
- This pause is a precautionary measure to ensure SF can continue to reopen safely, to prevent SF from moving backwards, and to protect community health
- Paused reopenings include: indoor pools, bowling alleys, and locker rooms/showers at fitness centers
- Pause on expanding from 25% to 50% capacity includes: indoor dining, indoor worship, and indoor museums.
- DPH will monitor the Health Indicators, the risk of specific activities, the estimated Re of the virus, regional data, and the State's actions in determining when and how to move forward
- More information about San Francisco's reopening timeline can be found at:
<https://sf.gov/step-by-step/reopening-san-francisco>